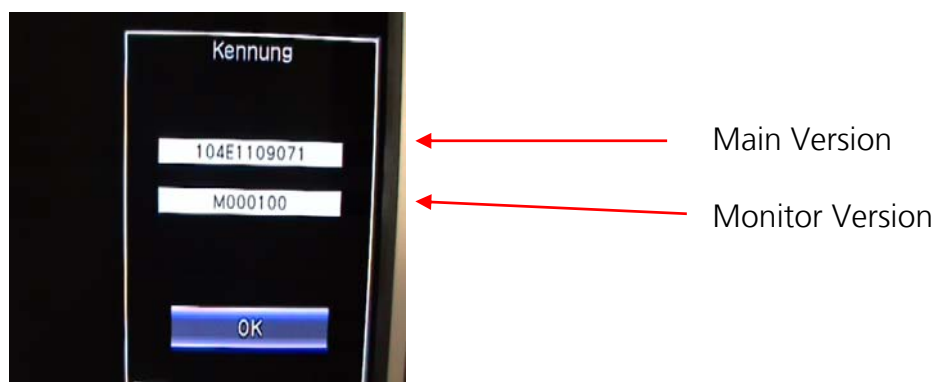


## Software Update UD20E / UHD80R Series

### Actual Software-Version of your LCD-TV's

1. Enter into MENU and select „Setup“ by using ◀/▶ and push OK.
2. Select „Identification „by using ◀/▶ und ▼/▲  
„Setup“ → „Information“ → „Identification“
3. You can see the actual Software Version.



4. Push End to leave the Menu.

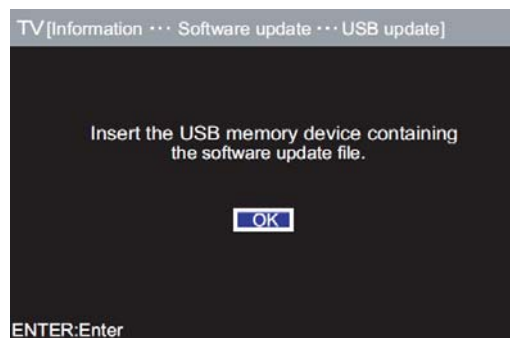
# SOFTWARE UPDATE

Download the actual Software from webpage [www.sharp.eu](http://www.sharp.eu).

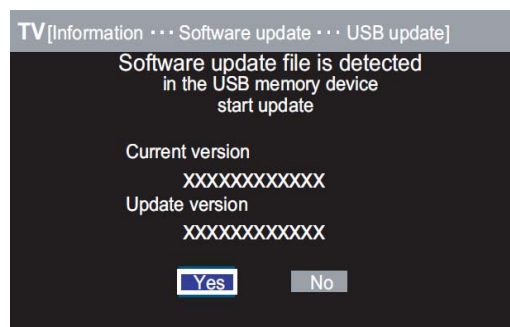
Copy the file on a USB memory direct to the root directory. There may not any other folders like movies, pictures or songs on this USB memory.

## **Procedure**

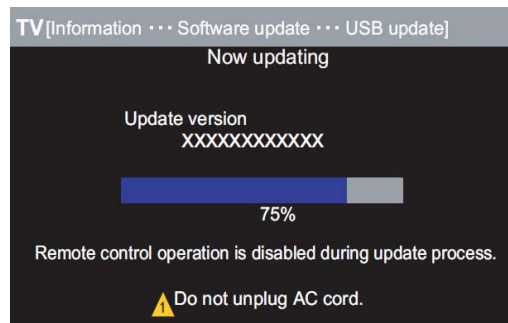
1. Switch on the TV
2. Insert the USB memory into the side terminal.
3. Enter into MENU, select „Setup“ by using ◀/▶ ▼/▲ and push OK
4. Select „USB update“ by using ◀/▶ und ▼/▲  
“Setup” → „Information“ → „Software Update” → “USB update”
5. The following screen will appear. Please confirm it with OK



6. After a short time actual and new Software appears on screen. Please select “Yes” and push OK



7. The screen becomes dark. **Please do not switch off the TV!** The Software Update starts after a short while and following screen appears.



8. Once the Update is successful, the following screen appears and the TV starts up. It is not necessary to switch off or unplug AC. After restart there will be the message to remove the USB stick. Push OK to finish the process.

